



Acme Sanitary Ware Co. Ltd.


1/F, Acme Building, 22-28 Nanking Street, Kowloon, Hong Kong
 Tel: 2388 7171 Fax: 2710 8012
 Email: acme@acmesanitary.com.hk
 Website: www.acmesanitary.com.hk



Pure Freude
an Wasser

PROJECT		REF		REV	ITEM CODE	
LOCATION		DATE			PAGE	

SANITARY WARE SPECIFICATION SHEET

Item Descriptions	GROHE (Germany) "Grohtherm SmartControl" thermostat shower mixer with mixing device and adjustable temperature limiter with 2 valves and integrated shower holder ; "Cosmopolitan 130" chrome plated shower head with shower and hand shower ; Both nominal flow rate 8.4 L/min in WELS Grade 1 ; Registration No. SB 10-0059 & SB 16-0012	
Model	29119000 (Thermostat mixer) 35600000 (Mounting box) 27664000 (Hand Shower) 27074000 (Shower Holder) 28364000 (Flexible Hose) 27057000 (Shower outlet) 28233000 + 28576000 (Shower head and arm)	
Material	Chrome Plated	
Manufacturer	GROHE Limited	
Supplier	Acme Sanitary Ware Co. Ltd Mr. Eric Wong/ Mr. Don Yuen	
Contact Tel/Fax	(852) 2388-7171 / (852) 2710-8012	
E-mail	acme@acmesanitary.com.hk	
Website	www.acmesanitary.com.hk	

Hand Shower

Dynamic flow pressure (kPa)	50	150	250	350	500
Flow rate (l / min)	5.40	8.30	8.50	8.50	8.60

Shower Head

Dynamic flow pressure (kPa)	50	150	250	350	500
Flow rate (l / min)	6.00	8.00	8.50	8.55	8.77



Note:

* All information of the above is for the reference only. No prior notice is made if any changes.



PROJECT		REF		REV	ITEM CODE	
LOCATION		DATE			PAGE	

SANITARY WARE SPECIFICATION SHEET

Grotherm SmartControl Thermostat for concealed installation with 2 valves set for final installation for GROHE Rapido SmartBox 35 600 000 metal wall escutcheon with GROHE QuickFix (covered escutcheon and shaft sealing, covered fixing), retroactively 6° adjustable GROHE StarLight chrome finish GROHE SmartControl push for ON-OFF, turn for volume adjustment from EcoJoy to full flow exchangeable symbols GROHE TurboStat compact cartridge with wax thermoelement GROHE SafeStop safety button at 38°C (calibration required) GROHE SafeStop Plus optional temperature limiter at 43°C included built-in non return valve and dirt strainers multiple outlets can be run simultaneously without roughing-in-set flow performance: outlet B = 24 l/min outlet C = 26 l/min	GROHE Rapido SmartBox Universal rough-in box, 1/2" 3 outlets 1/2" 2 inlets below, 1/2" installation depth 75-105 mm connection unit in DR brass pre-mounted flushing plug stable build-in box and protective cover fixing options for solid walls and dry cladding gasket without set for final installation	Illustration/ Drawing
--	---	----------------------------------

Dynamic flow pressure (kPa)	50	150	250	350	500
Flow rate (l/min)	6.00	8.00	8.50	8.55	8.77

Euphoria Cosmopolitan 160

Head shower 1 spray

Rain

Ball joint +/- 15° rotatable

connection thread 1/2"

GROHE EcoJoy 9.5 l/min flow limiter

GROHE DreamSpray perfect spray pattern

GROHE StarLight chrome finish

SpeedClean anti-limescale system

suitable for instantaneous heater

Rainshower

Shower arm 286 mm

connection thread 1/2"

can be used for all Rainshower head

showers except Rainshower Jumbo

GROHE StarLight chrome finish

Shower Head



- 4 sprays: GROHE Rain O², Rain, Bokoma Spray and Jet
- 2.5 gpm (9.5 l/min) flow limiter
- GROHE DreamSpray perfect spray pattern
- GROHE One-click showering spray selection via push button
- GROHE StarLight chrome finish
- SpeedClean anti-lime system
- Inner WaterGuide for a longer life
- Universal mounting system (fits all standard shower hoses)
- Suitable for instantaneous heater
- Max Flow Rate 2.5 gpm (9.5 L/min)
- Min. recommended pressure: 15 psi (1.0 bar)

Hand Shower



Dynamic flow pressure (kPa)	50	150	250	350	500
Flow rate (l/min)	5.40	8.30	8.50	8.50	8.60

Note:

* All information of the above is for the reference only. No prior notice is made if any changes.

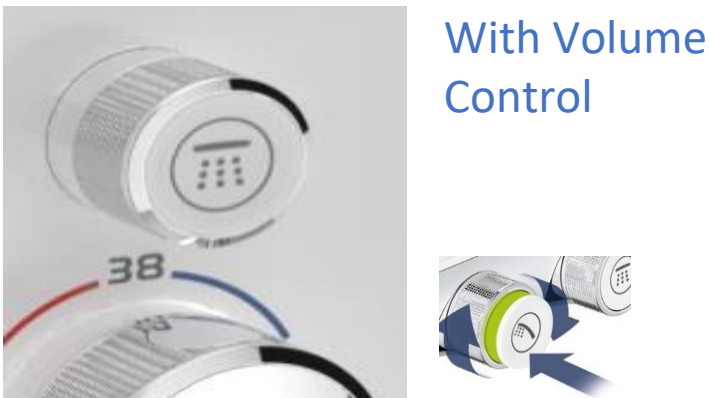
3 Key advantageous comparisons with another brand

1) Only 1 wall plate needed = Half expenditures + Smarter design

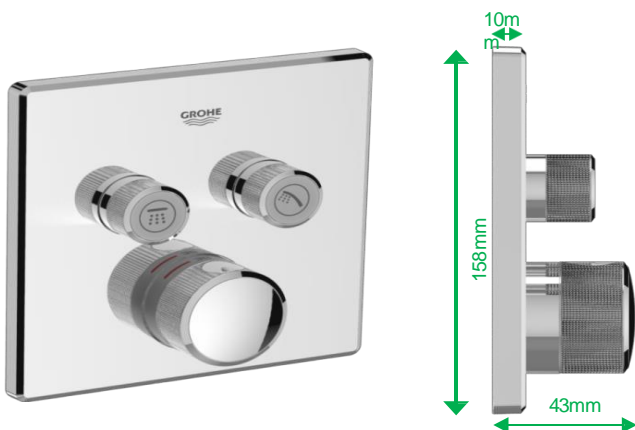
Brand x



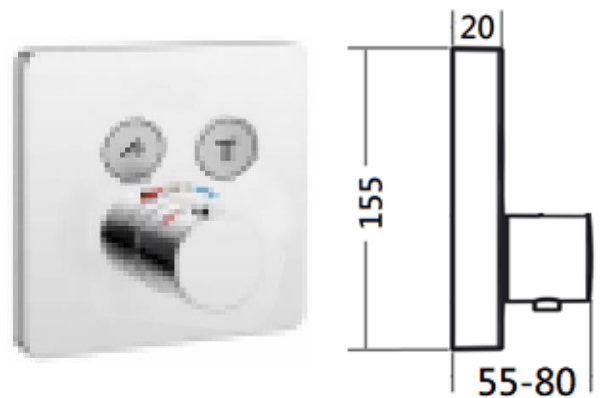
2) Integrated Volume Control



3) Slim Design, only 40mm overall projection for more space under the shower + smarter design



Slim design up to 43mm



Thickness up to 80mm



Acme Sanitary Ware Co. Ltd.

1/F, Acme Building, 22-28 Nanking Street, Kowloon, Hong Kong

Tel: 2388 7171 Fax: 2710 8012

Email: acme@acmesanitary.com.hk

Website: www.acmesanitary.com.hk



PROJECT		REF		REV	ITEM CODE	
LOCATION		DATE			PAGE	

SANITARY WARE SPECIFICATION SHEET

Rainshower®

Shower outlet elbow, 1/2"

male thread

with round escutcheon

Protected against backflow

GROHE StarLight® chrome finish

Euphoria Cube

Wall hand Shower holder

non-adjustable

GROHE StarLight chrome finish

1500 mm

smooth surface for easy cleaning

tensile strength 500 N

pressure resistance up to 5 bar

heat resistance 70°C

AntiFold bendproof

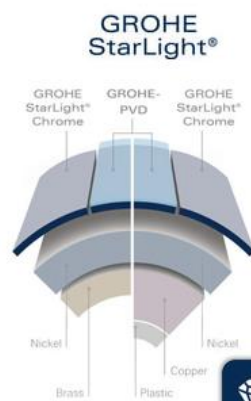
universal connection G 1/2" x 1/2"

RotaFlex for Twistfree-function

GROHE StarLight chrome finish

blister pack

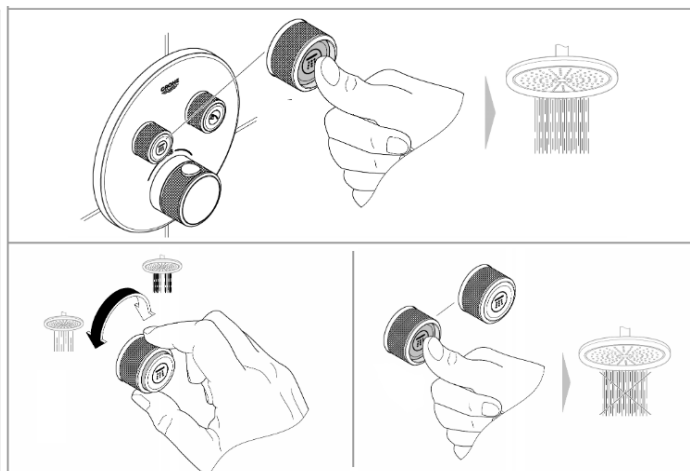
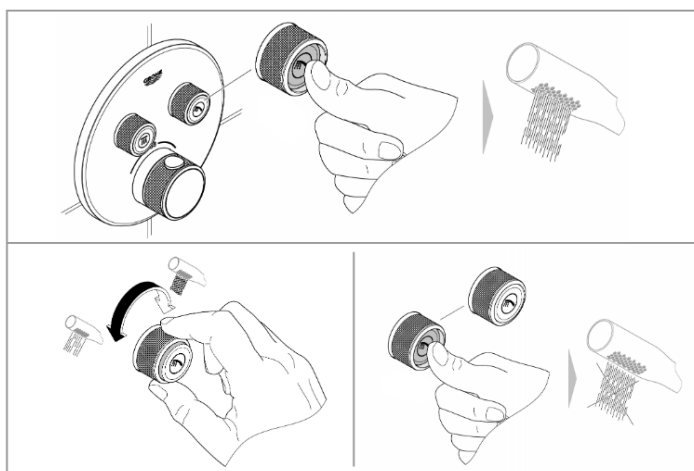
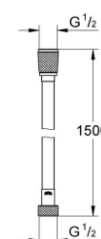
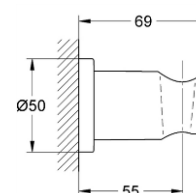
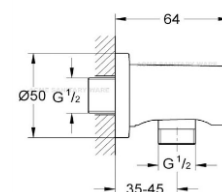
Key Features & Innovations



GROHE surface hardness



GROHE scratch resistance



Note:

* All information of the above is for the reference only. No prior notice is made if any changes.

註冊號碼 (Registration No.) : SB 10-0059




自願參與用水效益標籤計劃 - 沐浴花灑
Voluntary Water Efficiency Labelling Scheme - Showers for Bathing



茲證明
This is to certify that

將下列花灑在本計劃內註冊：
has registered the following shower under this scheme :

牌 子 / Brand	:	GROHE
型 號 / Model	:	28233 000
原產地 / Country or Region Origin	:	Germany

在用水效益標籤上展示的標誌 <i>Symbolic Presentation on the Water Efficiency Label</i>	:	 滴水點 <i>Water droplet(s)</i>
用水效益級別 <i>Water Efficiency Grade</i>	:	1
耗水量 <i>Water Consumption</i>	:	8.4 公升/分鐘 <i>litres/minute</i>

簽發日期:
Date of Issue: 8 September 2010



水務署
Water Supplies Department



水務署署長(錢柱森代行)
for Director of Water Supplies




自願參與用水效益標籤計劃 - 沐浴花灑
Voluntary Water Efficiency Labelling Scheme - Showers for Bathing



茲證明
This is to certify that

將下列花灑在本計劃內註冊：
has registered the following shower under this scheme :

牌 子 / Brand	:	GROHE
型 號 / Model	:	27664000
原產地 / Country or Region Origin	:	Germany

在用水效益標籤上展示的標誌 <i>Symbolic Presentation on the Water Efficiency Label</i>	:		滴水點 <i>Water droplet(s)</i>
用水效益級別 <i>Water Efficiency Grade</i>	:	1	
耗水量 <i>Water Consumption</i>	:	8.4	公升/分鐘 <i>litres/minute</i>

簽發日期:
Date of Issue: 28 December 2016



水 務 署
Water Supplies Department



水務署署長(周世威代行)
for Director of Water Supplies



水務署

Water Supplies Department

香港灣仔告士打道七號入境事務大樓

Immigration Tower, 7 Gloucester Road, Hong Kong



電話: 2829 4355
Email: wsdinfo@wsd.gov.hk

圖文傳真
Facsimile

2824 0578

(2) in WSD 3321/17 Pt.1 T/J(1466)

19 December 2017

Approval of "GROHE" Thermostatic Mixing Valves

Your letter ref. WRC/1545 dated 27 November 2017 refers.

Having considered the test report ref. J21968 issued on 2 November 2017 by Nutek Systems (HK) Ltd., this Authority accepts that the fittings described below comply with, and their use when correctly installed does not contravene, the Waterworks Ordinance and Regulations.

Name of Manufacturer: Grohe AG

Country of Origin: Germany

Brand: Grohe

Details of Fitting: 1/2" Thermostatic mixing valve

Model:
35600000 + 29124000
35600000 + 29119000
35600000 + 29151LS0
35600000 + 29156LS0

Body Markings:

Expiry Date:

23 October 2022

This Authority hereby permits the use of the above fittings in fresh water plumbing systems subject to full adherence to Waterworks installation requirements. In particular, you are required to draw your customers' attention to the following requirement-

"The cold water supply to the fittings shall be drawn from the same source that supplies the hot water apparatus so as to provide a balanced pressure and to obviate the risk of scalding in the event of a restriction or failure in the water supply." AND

"The shower head or handspray should not be placed in submerged conditions and should be securely fixed to the original position after use."

A condition of this acceptance is that the fittings to be installed shall be replicas of the samples as certified by the testing agent mentioned above and without modifications. This acceptance may be withdrawn at any time if the standard of the fittings installed fails to meet that of the approved samples or if the fittings are found to be unsuitable for use in fresh water plumbing systems.

This acceptance is only applicable to the main body of the fittings, unless other specified.

For the use of the fittings in any project, the Acceptance Reference Number at the bottom of this letter must be quoted as a means of identification of acceptance of the fittings by this Authority.

Should you have any enquiries, please contact our Engineer Mr. Terry KUNG at tel. no. 2294 2656.

Yours faithfully,



(CHAN Chung Kun)
for Water Authority

c.c. WSD 3321/1/82] - without catalogue
 ME/MC] - with soft copy only